



**You have a part to play!**

# **Biomedical Sciences**

[www.ru.nl/masters/bms](http://www.ru.nl/masters/bms)

**Radboud University**



**Radboudumc**  
university medical center



## Dreams of a Biomedical Scientist: A Malaria-free world, safe drug use during pregnancy, wearable artificial kidneys, the prevention of Alzheimer's disease.

### Introduction

At Radboud University we know the scope of the biomedical sciences field, and that it ranges from molecule to man to population. We believe that researchers excel when working on a topic that they are passionate about, and therefore allow our students to determine the direction of their studies. Our programme is for inquisitive students with perseverance, who want to make their own mark on the improvement of healthcare. Biomedical sciences is a broad field from infectious diseases to toxicology, and from epidemiology to immunology and cancer. It's also broad in its approach to any one of these areas. For example, you could tackle the issues within clinical human movement sciences from a neurological or from a clinical angle. The aim of all of this research is the same: to improve the well-being of patients.

### Why Biomedical Sciences at Radboud University?

You can choose from eight specialisations and three career profiles, to help kick-start your career. There are very strong links with the research at our three renowned institutes. Furthermore, we have a multidisciplinary approach to research and a wide focus on the field of biomedical sciences, from molecule to man to population. You'll do research within clinical practice in order to understand that the health and well-being of the patient is the ultimate goal of all biomedical research. And last, but not least, the specialisation coordinator, who is an experienced researcher, will be your personal mentor and coach.

### The specialisations

You can choose one of the following specialisations:

1. Immunology and host defence
2. Clinical human movement sciences
3. Epidemiology
4. Health technology assessment
5. Drug safety and toxicology
6. Molecular medicine
7. Medical neuroscience

### Career profiles and prospects

Apart from a research institute, you must also choose a career profile: research, communication, or consultancy. Each profile will, besides refined research skills, help you develop a different set of qualifications. You can think of careers at research institutes as well as in academia, government agencies, teaching hospitals, public health organisations or in the pharmaceutical and medical industry. About 60% of our graduates go on to do a PhD.

Once you have graduated, you'll be awarded a Master of Science (MSc) degree.

### The programme in short

The programme begins in September and takes two years.

The 120 EC are subdivided as follows:

1. A coherent set of BMS courses ( $\geq 24$  EC)
2. Internships ( $\geq 60$  EC)
3. Literature thesis (6 EC)

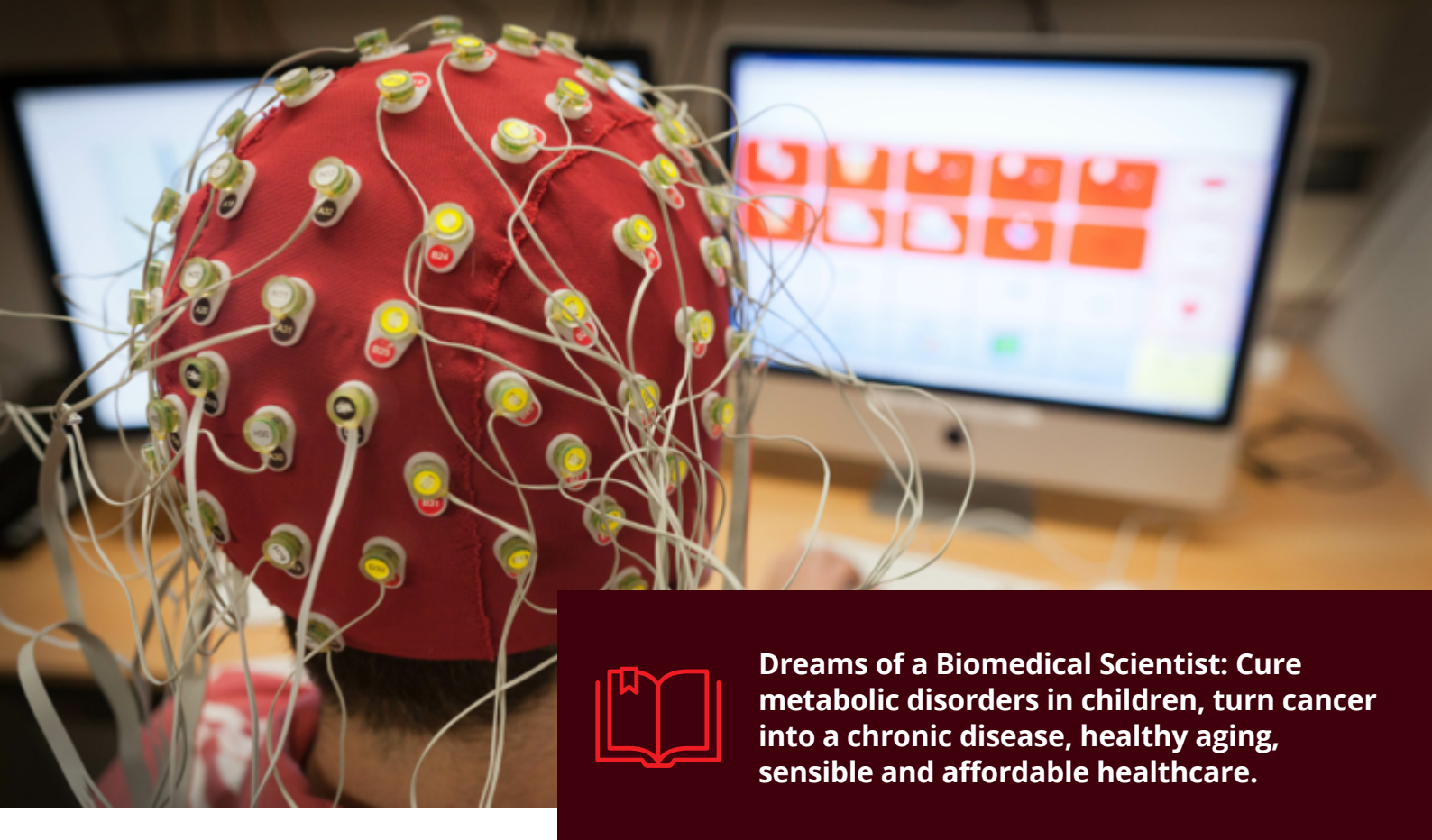
### Tailor-made programme

Our Master's in Biomedical Science allows you – within the parameters of the programme – to construct a curriculum that meets your research interests and career goals. Important is that all your choices add up to a coherent programme. The specialisation coordinator will help you determine your internships and theoretical education. Your constructed programme must then be approved by the Board of Examiners.

### Courses (at least 24 EC)

There are specialisation courses and career profile courses. Besides these, we offer a broad range of biomedical courses from which you can choose. You can also choose additional courses in other programmes at Radboud University or at other universities in the Netherlands or abroad.





**Dreams of a Biomedical Scientist: Cure metabolic disorders in children, turn cancer into a chronic disease, healthy aging, sensible and affordable healthcare.**

### **Internships (at least 60 EC)**

You will do two internships during this programme. Both internships must have a study load of at least 30 EC. At least one internship involves biomedical, scientific research, a second internship is related to your chosen career profile.

This implies that for a student with a research profile, both internships involve scientific research. Students with a communication profile can, for example, perform a second internship in health communication and students with a consultancy profile in health policy analysis.

### **Literature thesis (6 EC)**

Your literature thesis must focus on a disease, mechanism, or methodology. It serves to demonstrate the depth of your understanding of a biomedical topic.

### **Electives**

After selecting the minimal required study load of courses, internships and thesis you get to choose what you want to learn during the remaining study load. This could be theoretical courses, extension of an internship and/or an extra internship.

### **Personal assistance**

Every student in the programme is assigned to a specialisation coordinator who is an experienced researcher affiliated with the specialisation you choose. He/she will advise and support you during your entire programme and help you compose your programme of courses and internships.



MARGARITA STAVREVSKA

**BMS offers a unique opportunity to create your own programme. It gives you the chance to develop your knowledge in certain direction, but also the degree of freedom to change this in case you change your mind, by choosing among a wide number of courses.**

**Eleni-Andria Grosu (Romania)**

**The programme is very flexible. I love choosing which courses I want to take, when to write my Literature Thesis or when to do my internships. It's rather easy to adjust the programme to your personal life, although it's a demanding programme. This degree opens a world of opportunities for the future!**



### **Admission requirements**

1. A Bachelor's degree (equivalent to that of a Dutch research university) in Biomedical Sciences or a related discipline, as evaluated by the Board of Examiners.
2. Fluency in English, both written and spoken. Non-native speakers of English without a Dutch Bachelor's degree of a Research University need one of the following: a TOEFL score of at least 575 (paper-based), an IELTS score of 6.5, or a Cambridge Certificate (CAE or CPE) with a mark of C or higher.
3. Relevant information on education and research experience.

Students who meet these requirements may be invited for an interview.

### **Scholarships**

For this programme we have partial scholarships available for non-EU students, through the Radboudumc Studyfund, the Radboud Scholarship Programme, the Holland Scholarship, the Orange Tulip Scholarship and the Netherlands Fellowship Programme, see [www.ru.nl/scholarships](http://www.ru.nl/scholarships). All these scholarships are only available to students with non-EEA citizenship. There are no full scholarships available for this programme, and we do not participate in the Radboud Encouragement Scholarship.

### **Application deadlines**

The programme starts at the beginning of September. Students who need a scholarship, need to have completed their application by 1 February. We recommend all other students to complete their application by 1 May in order to guarantee a place in the courses of your choice. The final deadline is 1 July.

We recommend you to start at least one month before the deadline with your application, in order to allow yourself time for corrections. Successful international applicants who apply before these dates will be guaranteed support with accommodation and visa and residence permit application.

### **More Information**

Programme information and Admissions:  
[Admissions@radboudumc.nl](mailto:Admissions@radboudumc.nl)  
Tel: +31 24 361055

### **Social Media**

 [www.facebook.com/radboudmedical](https://www.facebook.com/radboudmedical)  
 +31 6 4695 1068

